

## GSI Creos in Numbers



### Number of Overseas Bases

# 27

Our 27 bases overseas enable to expand our business globally.



### Overseas Sales Ratio

# 70.3 %

(Fiscal Year Ended March 31, 2025)

We carry out diverse transactions with various countries centering on China and other countries of Asia, Europe, and the United States, and in recent years, our overseas sales ratio has remained at a high level.



### Established

# 1931

Since its establishment in 1931 as an exporter of raw silk to the United States, we have built up a track record of success in the fields of textiles and industrial products respectively for more than 90 years. We have been diversifying and expanding our businesses by leveraging the expertise we have accumulated over the years.

## Company Profile

Company Name	GSI Creos Corporation	Listed Market	Tokyo Stock Exchange Prime Market (Securities Code : 8101)
Head Office	3-8-2 Shiba, Minato-ku, Tokyo	Consolidated Net Sales	¥165,541 million (Fiscal Year Ended March 31, 2025)
Representative	President and CEO Tadaaki Yoshinaga	Consolidated Number of Employees	823 (as of March 31, 2025)
Established	October 31, 1931	Bases	9 domestic and 27 overseas
Capital	¥7,186 million	Consolidated Subsidiaries	9 domestic and 9 overseas

## Directors and Executive Officers

### ■ Directors

Representative Director	President and CEO
Representative Director	Executive Vice President and COO
Director	Senior Managing Executive Officer
Director	Senior Managing Executive Officer
Outside Director	
Outside Director	

Tadaaki Yoshinaga
Kunihiro Ono
Masateru Nakayama
Hiroki Nishimura
Kazunori Hattori
Erika Chibazakura

### ■ Executive Officers

Senior Executive Officer	Tetsuya Mukai
Senior Executive Officer and CFO	Toyoshi Adachi
Senior Executive Officer	Yuichi Tamura
Senior Executive Officer	Motoya Nakamura
Executive Officer	Akinori Hamano
Executive Officer	Masahiko Morita
Executive Officer	Satoshi Fukuoka
Executive Officer	Takeshi Ouchi
Executive Officer	Kazuya Uchiyama
Executive Officer	Yumiko Okuyama

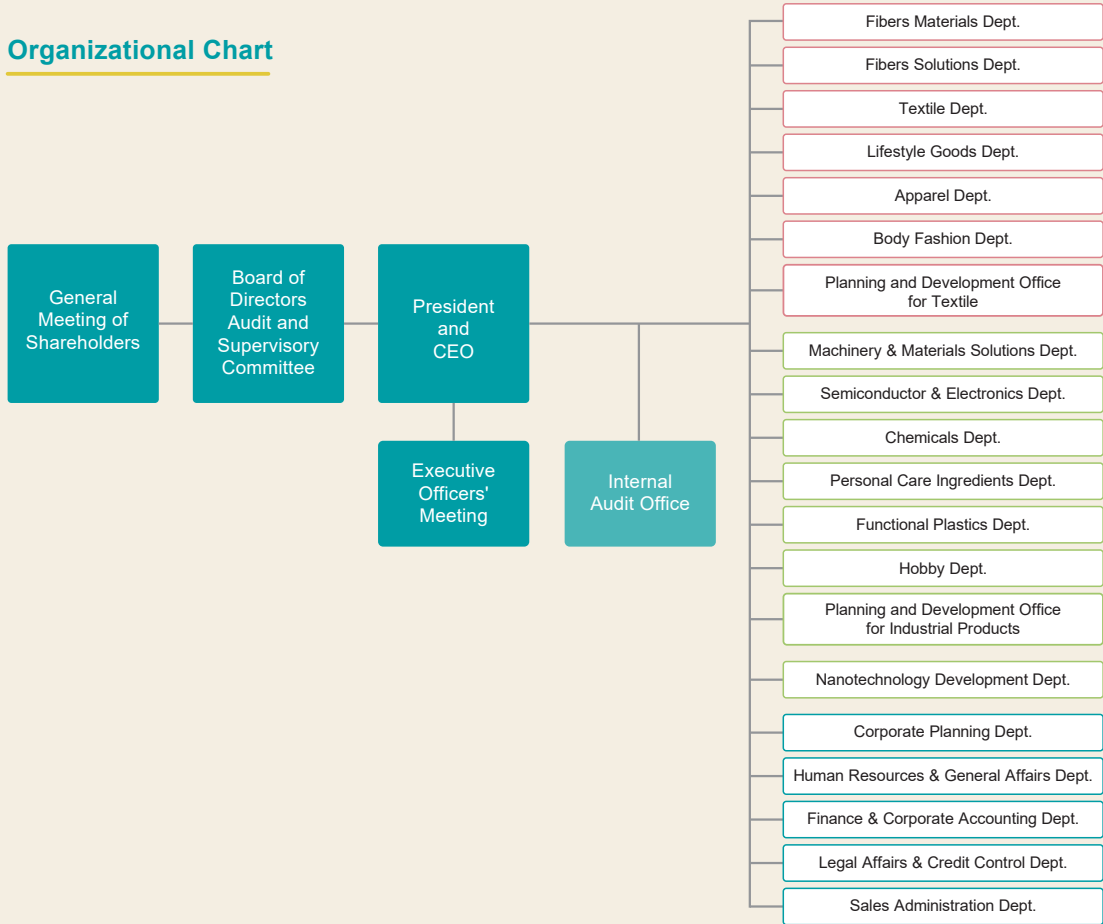
### < Audit and Supervisory Committee Members >

Director	Full-time Audit and Supervisory Committee Member	Fumihiro Onishi
Outside Director	Audit and Supervisory Committee Member	Takafumi Hayano
Outside Director	Audit and Supervisory Committee Member	Keiko Hatta

Fellow	Takashi Yanagisawa
--------	--------------------

(as of April 1, 2026)

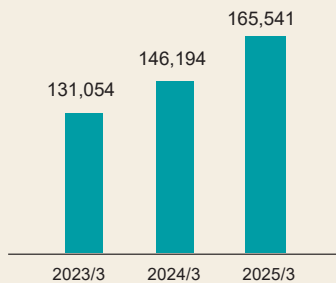
## Organizational Chart



## Business Results

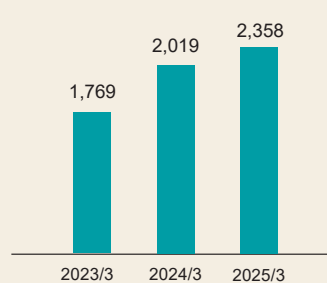
Net Sales

(Unit: million yen)



Profit Attributable to Owners of Parent

(Unit: million yen)



For the latest information, please visit the GSI Creos corporate website.  
<https://www.gsi.co.jp/en/index.html>

(as of April 1, 2026)