

GSI Creos in Numbers



Number of Overseas Bases

27

Our 27 bases overseas enable to expand our business globally.



Overseas Sales Ratio

69.4 %

(Fiscal Year Ended March 31, 2026)

We carry out diverse transactions with various countries centering on China and other countries of Asia, Europe, and the United States, and in recent years, our overseas sales ratio has remained at a high level.



Established

1931

Since its establishment in 1931 as an exporter of raw silk to the United States, we have built up a track record of success in the fields of textiles and industrial products respectively for more than 90 years. We have been diversifying and expanding our businesses by leveraging the expertise we have accumulated over the years.

Company Profile

Company Name	GSI Creos Corporation	Listed Market	Tokyo Stock Exchange Prime Market (Securities Code: 8101)
Head Office	3-8-2 Shiba, Minato-ku, Tokyo	Consolidated Net Sales	¥188,677 million (Fiscal Year Ended March 31, 2026)
Representative	President and CEO Tadaaki Yoshinaga	Consolidated Number of Employees	845 (as of March 31, 2026)
Established	October 31, 1931	Bases	9 domestic and 27 overseas
Capital	¥7,186 million	Consolidated Subsidiaries	9 domestic and 9 overseas

Directors and Executive Officers

■ Directors

Representative Director	President and CEO
Representative Director	Executive Vice President and COO
Director	Senior Managing Executive Officer
Director	Executive Officer
Outside Director	

< Audit and Supervisory Committee Members >

Director	Full-time Audit and Supervisory Committee Member
Outside Director	Audit and Supervisory Committee Member
Outside Director	Audit and Supervisory Committee Member

Tadaaki Yoshinaga
Kunihiro Ono
Hiroki Nishimura
Tetsuya Mukai
Kazunori Hattori

Fumihiko Onishi
Erika Chibazakura
Keiko Hatta

■ Executive Officers

Senior Executive Officer and CFO
Senior Executive Officer
Senior Executive Officer
Executive Officer
Executive Officer
Executive Officer
Executive Officer
Executive Officer
Executive Officer
Executive Officer
(Strategic Human Resources Management)

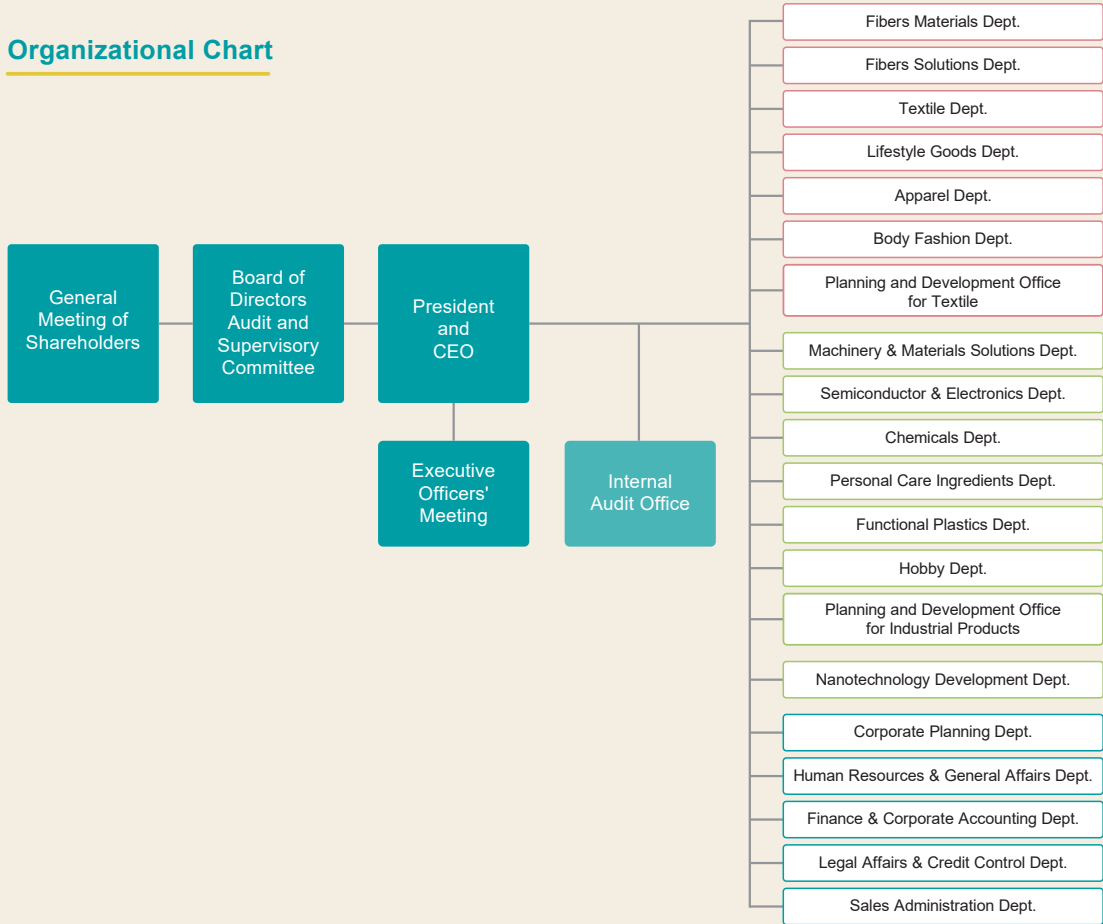
Fellow

Toyoshi Adachi
Yuichi Tamura
Motoya Nakamura
Akinori Hamano
Masahiko Morita
Satoshi Fukuoka
Takeshi Ouchi
Kazuya Uchiyama
Yumiko Okuyama

Takashi Yanagisawa

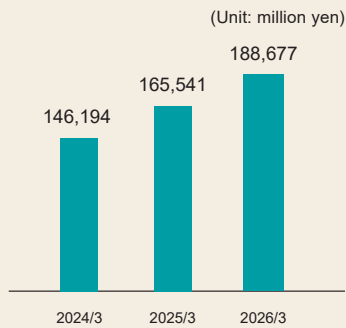
(as of June 24, 2026)

Organizational Chart

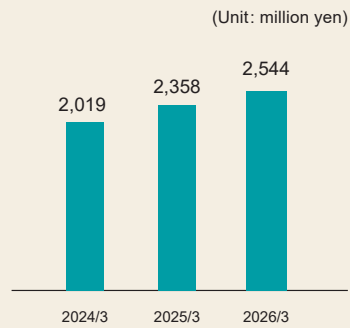


Business Results

Net Sales



Profit Attributable to Owners of Parent



For the latest information, please visit the GSI Creos corporate website.
<https://www.gsi.co.jp/en/index.html>

(as of June 24, 2026)